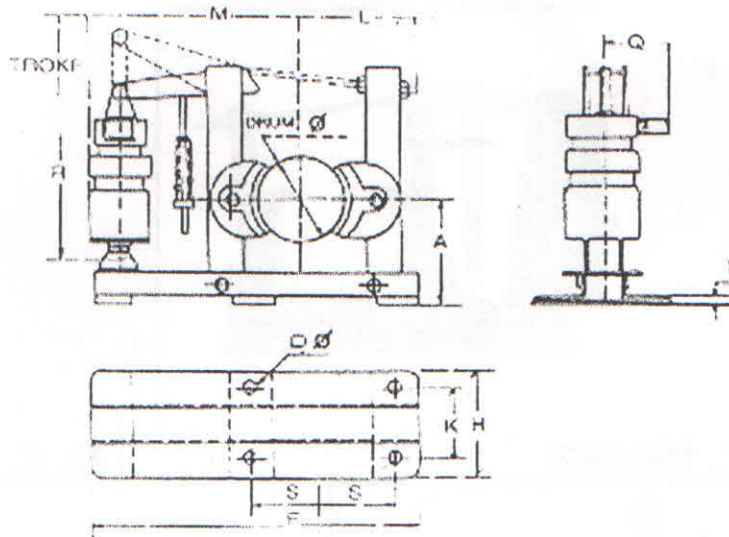


THRUSTER SHOE TYPE BRAKES

THRUSTER SHOE TYPE BRAKES



THRUSTER SHOE TYPE BRAKES

| MODEL | DRUM | TORQUE KGM | THRUSTER SIZE | STROKE | SHOE WIDTH IN MM | ANGLE OF SHOE MIN | A | FIXING DIMENSIONS | | | F | H | R | T | L | M | Q |
|----------|------|---------------|------------------|--------|------------------------|-------------------------|-----|----------------------|-----|----|-----|-----|-----|----|-----|-----|-----|
| | | | | | | | | S | K | D | | | | | | | |
| MTST 4 | 100 | 4 | 18 | 50 | 58 | 70% | 120 | 115 | 60 | 14 | 450 | 90 | 360 | 12 | 135 | 350 | 115 |
| MTST 8 | 150 | 8 | 18 | 50 | 70 | 70% | 150 | 155 | 60 | 14 | 490 | 90 | 360 | 12 | 170 | 390 | 115 |
| MTST 14 | 200 | 14 | 18 | 50 | 90 | 70% | 170 | 185 | 60 | 14 | 570 | 120 | 360 | 12 | 205 | 425 | 115 |
| MTST 25 | | 25 | 34 | | | | | | | | | | | | | | |
| MTST 20 | 250 | 20 | 18 | 50 | 110 | 70% | 200 | 220 | 70 | 14 | 765 | 130 | | 18 | 280 | 630 | 115 |
| MTST 30 | | 30 | 34 | | | | | | | | | | | | | | |
| MTST 30 | 300 | 30 | 18 | 50 | 140 | 70% | 240 | 265 | 80 | 18 | 790 | 130 | | 18 | 300 | 550 | 115 |
| MTST 35 | | 35 | 34 | | | | | | | | | | | | | | |
| MTST 50 | | 50 | 45 | | | | | | | | | | | | | | |
| MTST 125 | 400 | 125 | 75 | 50 | 180 | 70% | 320 | 320 | 100 | 18 | 850 | 200 | | 18 | 250 | 620 | 115 |
| MTST 75 | | 75 | 34 | | | | | | | | | | | | | | |
| MTST 100 | | 100 | 45 | | | | | | | | | | | | | | |

NOTE: 1. We reserve our rights to change any dimension without prior notice. 2. Nearest inch size shoe brake available on request with same price. 3. All dimensions are in mm, unless and otherwise stated. 4. Torque shown is normal torque. Actual torque is more or less depending upon liner, duty cycle, number of on and off, liver ratio etc.